

HOW TO MAKE A NOODLE PONY

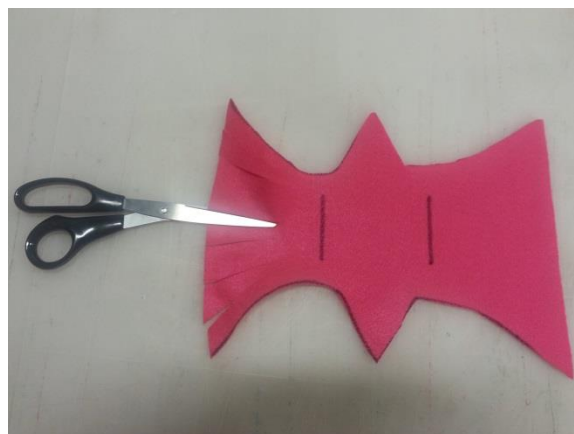
Materials:

- Scissors
- 9"x12" felt in different colors
- Swimming pool noodles
- Mega bulk yarn to make the reins
- Rubber bands
- Sharpies



Instructions:

1. Print and cut out the pattern on the last page (for the mane and bangs) and with a marker, trace it on the felt.
2. Now, cut the felt along the lines. You will also cut along the dotted lines to make a fringe for the mane and bangs. Use the scissors to cut the lines in the middle, which are the slits through which you will push your noodle in the following step.



3. Slip one end of the noodle through what will be the back of the horse's neck with the longer fringe. At about 20" from the top of the noodle, slip the other end into the open slit on the felt. This will soon form the bangs of the horse's mane. Then, bend the noodle at the top.



4. Continue to slip the felt all the way up to the crook of the noodle, and once it is in place, put a rubber band around the bent noodle to hold it in place.

It's time to put some tack on your horse!

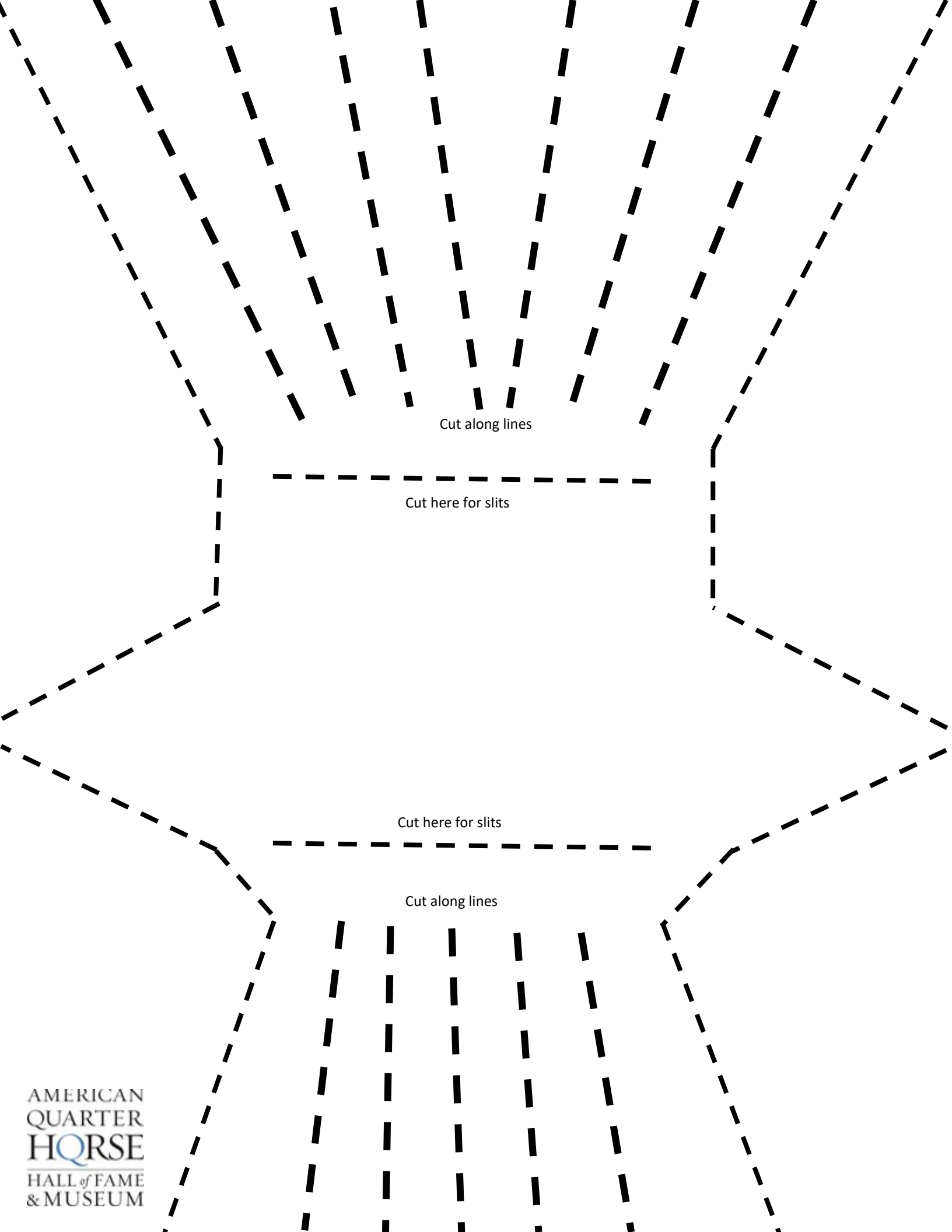
5. Using the bulk yarn, tie the bent noodle in place with a double knot. You can now remove the rubber band.



6. Then tie the ends of the yarn together to make a loop and form the reins.



7. Finally, use a sharpie to draw the horse's face.
8. You can now ride your noodle pony around your home or outside in your yard! Don't forget to register your horse!



Cut along lines

Cut here for slits

Cut here for slits

Cut along lines